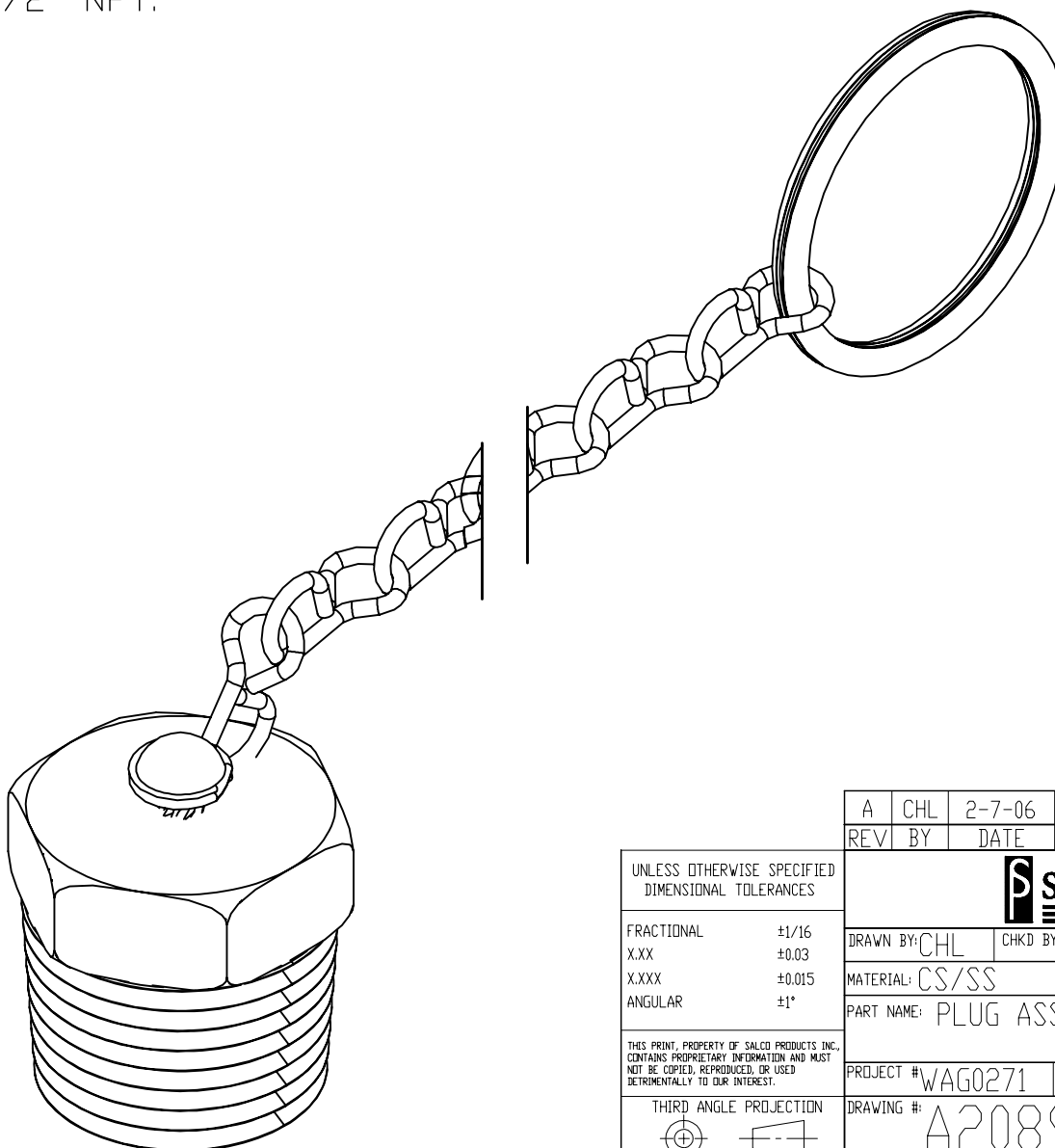


SALES DRAWING

- NOTES:
1. LENGTH OF CHAIN IS 8".
 2. 1/2" NPT.



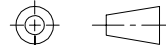
SALES DRAWING


UNLESS OTHERWISE SPECIFIED
DIMENSIONAL TOLERANCES

FRACTIONAL	±1/16
X.XX	±0.03
X.XXX	±0.015
ANGULAR	±1°

THIS PRINT, PROPERTY OF SALCO PRODUCTS INC.,
CONTAINS PROPRIETARY INFORMATION AND MUST
NOT BE COPIED, REPRODUCED, OR USED
DETREMENTALLY TO OUR INTEREST.

THIRD ANGLE PROJECTION



A	CHL	2-7-06	NEW PART ADDED TO SYSTEM	
REV	BY	DATE	DESCRIPTION	
<div><div> SALCO PRODUCTS, INC.</div><div></div></div>				
DRAWN BY: CHL		CHKD BY: PJG	SCALE: 2:1	APPROVAL DATE: 2-7-06
MATERIAL: CS/SS				
PART NAME: PLUG ASSEMBLY 1/2"				
PROJECT # WAG0271		PROTOTYPE AND DATE: CHL 8-9-05	APPROVED FOR PRODUCTION: PJG	
DRAWING #: A20896		PART #: TC05XSPA		